



To: Interested Parties

From: Andrew Baumann and Nicole Kozlowski, Global Strategy Group

Date: August 8, 2024

Re: NEW POLL RESULTS: Voters in Pennsylvania support significantly increasing the use of clean energy and believe in broader positive impacts

A new survey of registered voters in Pennsylvania conducted by Global Strategy Group finds that voters overwhelmingly support significantly increasing the use of clean energy sources like wind and solar in Pennsylvania. Voters hold a strongly favorable opinion of clean energy and believe that increasing the use of it will have a positive impact on a wide range of items, including future generations of Pennsylvanians, the health of Pennsylvanians, the commonwealth’s economy, and the reliability and affordability of electricity.

Furthermore, the survey indicates that supporting an expansion of clean energy is a major political winner in Pennsylvania. When the race for state legislature is framed as between a Democrat who supports significantly increasing the use of clean energy and a Republican who opposes an increase, the Democrat wins by 16 points – a +11-point shift in margin compared to the standard generic ballot.

Key Findings

Overwhelming majorities of voters support significantly increasing the use of clean energy in Pennsylvania. Over three-quarters of voters support significantly increasing the use of clean energy like wind and solar to generate electricity, including 48% who strongly support it. There is majority support in both the Philadelphia and Pittsburgh markets, as well as throughout the rest of the state. Additionally, support carries across partisan lines, garnering majority support from Democrats, independents, and Republicans.

SUPPORT FOR SIGNIFICANTLY INCREASING THE USE OF CLEAN ENERGY

Do you support or oppose the state of Pennsylvania significantly increasing its use of clean energy sources like wind and solar to generate electricity?

	Overall	Dem	Ind	GOP	Philly DMA	Pitts DMA	Non-Philly/ Pitts DMAs	Voters of Color	White Non-col.	White Col.
% Strongly Support	48	69	53	22	54	45	42	59	45	48
% Support	78	93	84	59	81	74	76	88	77	76
% Oppose	22	6	15	41	18	25	23	12	24	23
NET Support	+56	+87	+69	+18	+63	+49	+53	+76	+54	+52

Voters recognize the positive impacts of clean energy. Nearly three-quarters of voters (73%), hold a favorable opinion of clean energy like wind and solar. This positive perception of clean energy broadly inform voters’ attitudes toward the positive impacts of clean energy. Around three-in-five voters believe that significantly increasing the use of clean energy will have positive impacts on future generations, air and water quality, health, and climate change, while solid pluralities believe it will have positive impacts on the economy, the reliability of electricity, and the affordability of electricity.

CLEAN ENERGY IMPACT

Just based on what you know, if the state of Pennsylvania were to significantly increase its use of clean energy sources like wind and solar to generate electricity, do you think it would have a positive impact, a negative impact, or no impact on each of the following:

	% Positive	% Negative	NET Positive			
			Overall	Philly DMA	Pitts DMA	Non-Philly/Pitts DMAs
Air and water quality in Pennsylvania	62	9	+53	+60	+47	+47
Climate change	57	6	+51	+58	+46	+45
The health of families like yours	57	7	+50	+60	+44	+42
Future generations of Pennsylvanians	63	16	+47	+53	+46	+40
Pennsylvania's economy	49	23	+26	+32	+22	+23
The reliability of electricity in Pennsylvania	47	21	+26	+35	+23	+15
The affordability of electricity in Pennsylvania	46	25	+21	+28	+24	+9

Support for clean energy is a political winner. In order to test the potential political impact of support for clean energy, we simulated a scenario where a Democrat supports a significant expansion, and their Republican opponent opposes the same. While Democrats have a narrow lead on the generic vote for state legislature (45% Democrat/40% Republican), when the race is re-framed as between a Democrat who supports significantly increasing the use of clean energy in Pennsylvania and a Republican who opposes it, the Democrat leads by 16-points – an +11-point increase on the margin. This is a large shift in the vote for this kind of exercise and indicates that support for clean energy is a political winner and opposition is a clear political loser (something we have little doubt would remain true if the partisanship were reversed in this scenario).

When the ballot is reframed in this manner, a supportive Democrat gains across all demographics and geographies but makes especially large gains with more conservative voters, including voters outside of Philadelphia and Pittsburgh, seniors (ages 65+), and white non-college voters.

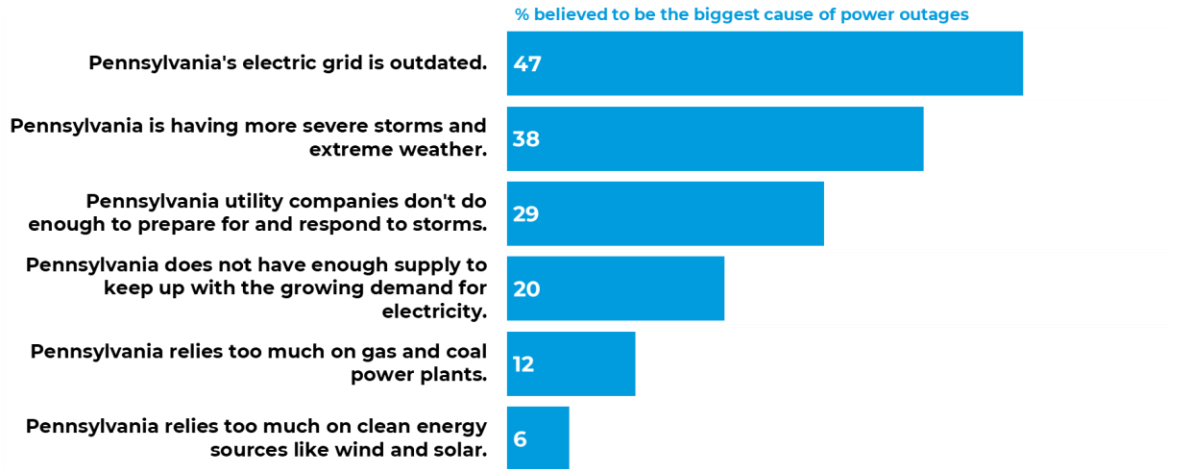
LEGISLATIVE VOTE WITH SUPPORT FOR CLEAN ENERGY

Now thinking again about the election for Pennsylvania State Legislature, if the election for Pennsylvania State Legislature were today, and the candidates were a Democrat who supports Pennsylvania significantly increasing its use of clean energy sources like wind and solar to generate electricity or a Republican who opposes Pennsylvania significantly increasing its use of clean energy sources like wind and solar to generate electricity, which candidate would you vote for?

	Overall	18-44	45-64	65+	Voters of Color	White Non-col.	White Col.	Philly DMA	Pitts DMA	Non-Philly/Pitts DMAs
Democrat who supports clean energy	54	59	54	49	72	48	56	59	55	50
Republican who opposes clean energy	38	32	39	45	23	43	38	29	42	45
NET Democrat	+16	+27	+15	+4	+49	+5	+18	+30	+13	+5
NET Generic Democrat	+5	+18	+3	-11	+38	-9	+12	+26	+2	-15
NET Shift	+11	+9	+12	+15	+11	+14	+6	+4	+11	+20

Voters do not blame clean energy sources for power outages in the state. Instead, they point to the need to update the grid and the severity and frequency of extreme weather and storms.

Causes of power outages



ABOUT THIS POLL

Global Strategy Group conducted a survey of 800 registered voters in Pennsylvania between June 10 and 17, 2024. The survey has a margin of error of +/- 3.5%. Of the 800 interviews, half were conducted by telephone or a text invitation to participate in an online survey; the other half were conducted via web-based panel with participants matched to the voter file. Care has been taken to ensure the geographic, political, and demographic divisions of the population of registered voters are properly represented.